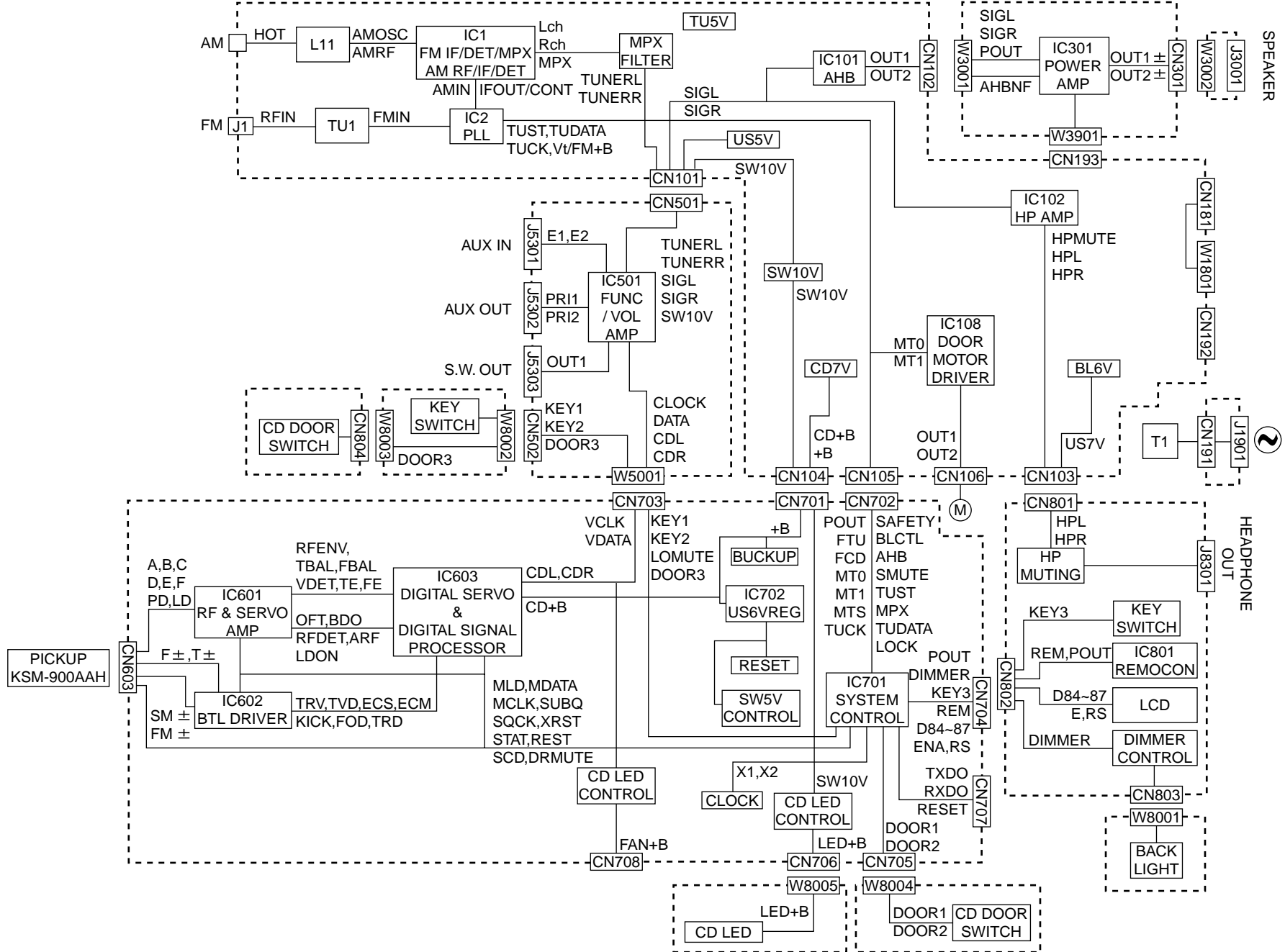


Block diagram

A
B
C

1 2 3 4 5



< M E M O >

Standard schematic diagrams

■ CD servo control section

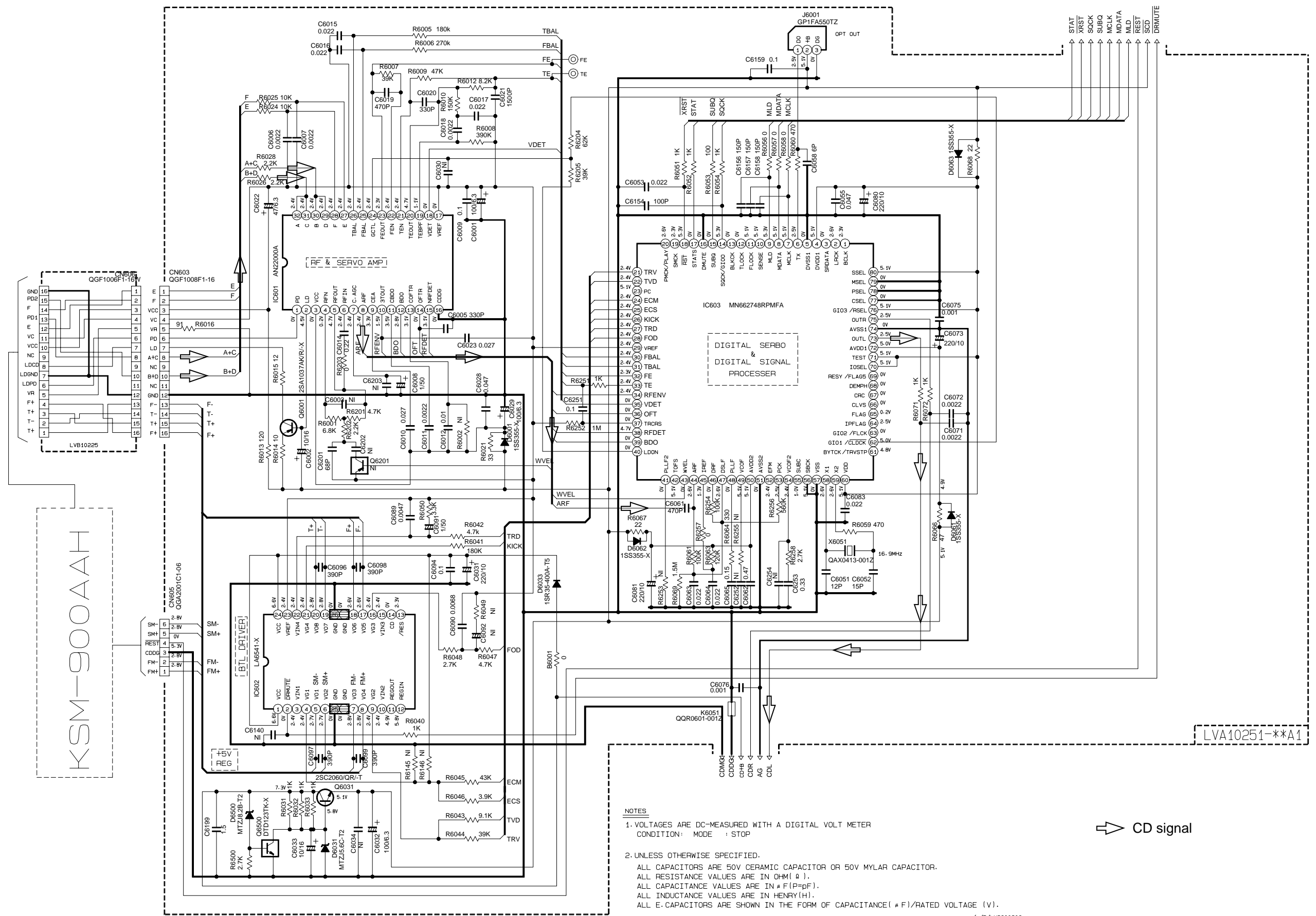
5

4

3

2

1



- NOTES**
1. VOLTAGES ARE DC-MEASURED WITH A DIGITAL VOLT METER
CONDITION: MODE : STOP
 2. UNLESS OTHERWISE SPECIFIED.
ALL CAPACITORS ARE 50V CERAMIC CAPACITOR OR 50V MYLAR CAPACITOR.
ALL RESISTANCE VALUES ARE IN OHM (Ω).
ALL CAPACITANCE VALUES ARE IN # F (P=pF).
ALL INDUCTANCE VALUES ARE IN HENRY (H).
ALL E. CAPACITORS ARE SHOWN IN THE FORM OF CAPACITANCE(# F)/RATED VOLTAGE (V).

➡ CD signal

Note:tr/s/jsc/sd550/LVS200602_GNS10002-001A 2/8
FS-SD550R/770R/990R_ALL ver.

/s/R/LVS200602

Power supply & main circuit section

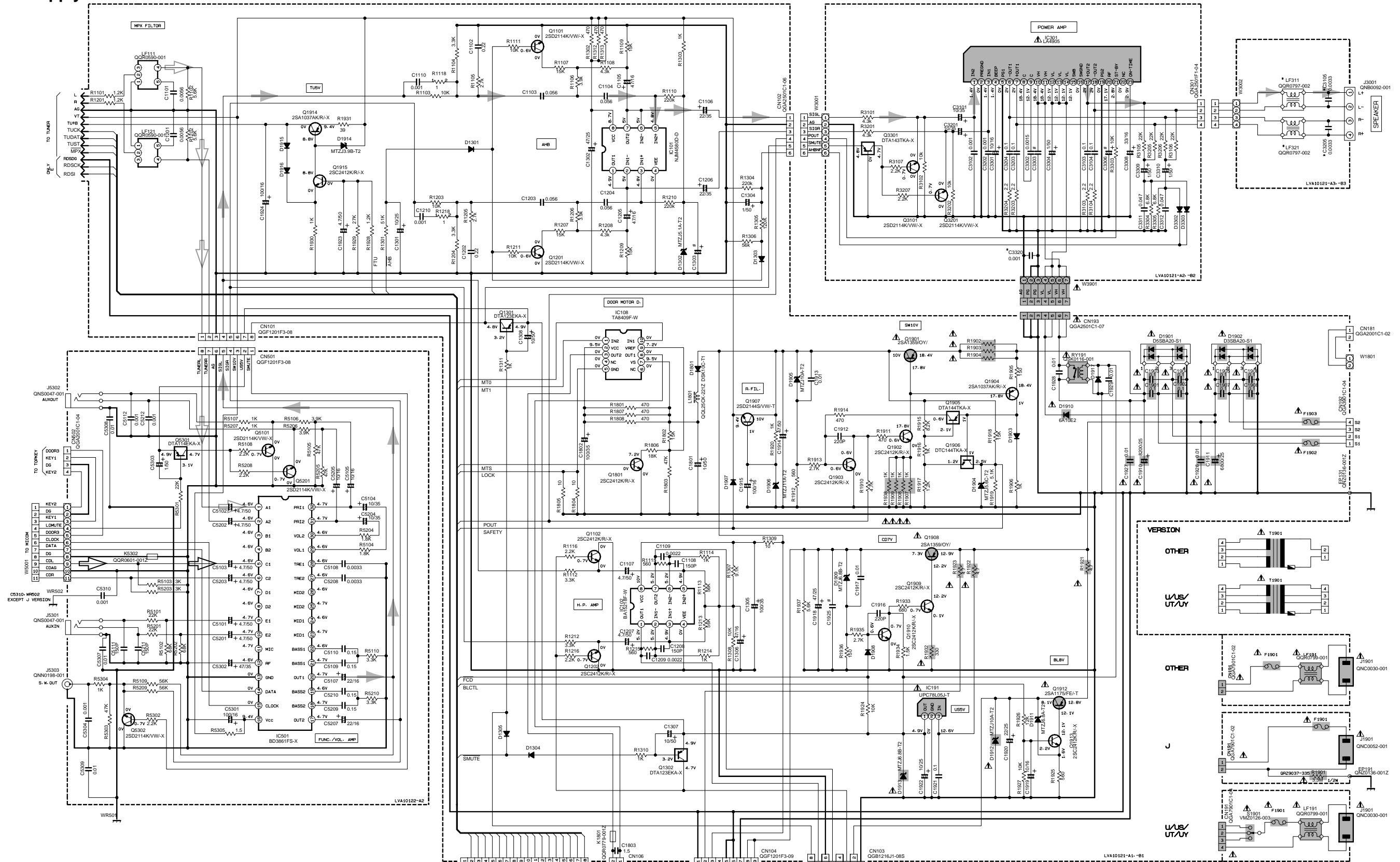
5

4

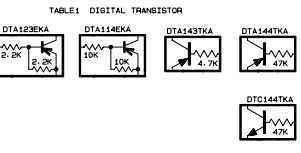
3

2

1



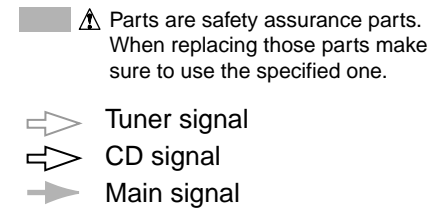
- NOTES**
- VOLTAGES ARE DC-MEASURED WITH A DIGITAL VOLT METER OR OSCILLOSCOPE WITHOUT INPUT SIGNAL. CONDITION --- CD STOP MODE.
 - UNLESS OTHERWISE SPECIFIED RESISTORS ARE 1/4W ±5% CARBON RESISTOR. ALL RESISTANCE VALUES ARE IN Ω(M)K. ALL CAPACITORS ARE CERAMIC CAPACITOR OR MYLAR CAPACITOR. ALL CAPACITANCE VALUES ARE IN p(F)μ(F). ALL INDUCTANCE VALUES ARE IN m(H)μ(H). ALL CAPACITORS ARE SHOWN IN THE FORM OF CAPACITANCE (p(F)/V)RATED VOLTAGE (V). ALL DIODES ARE 1SS133.
 - *MARKS ARE B/E/EN/EE/UB VERSION ONLY OTHER VERSIONS ARE OPEN OR SHORT



MARKS

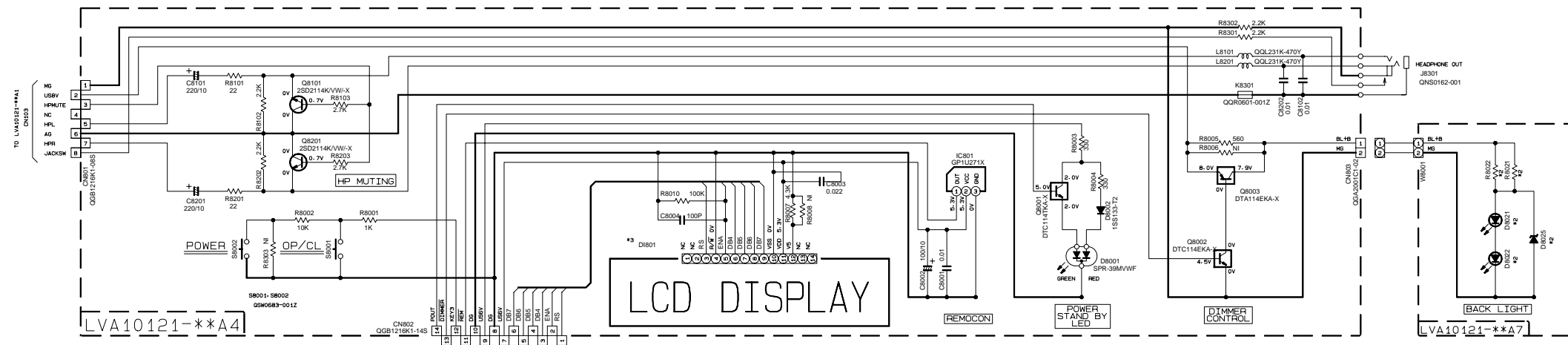
	C1303	C3303	C3306	C1905
FS-SD990	22/35	0-01	100/35	0-01
FS-SD770	↑	↑	↑	↑
FS-SD550	47/25	0-1	47/25	0-022

	T1901	F1901	F1902	F1903
J/C	00T0286-002	0MF5192-1R0-J1	0MF5191-6R0-J1	0MF5191-4R0-J1
W/AV	00T0286-003	0MF5192-1R0-J1	0MF5192-6R3-J1	0MF5192-3R15-J1
W/AV	00T0286-004	0MF5192-1R0-J1	0MF5192-6R3-J1	↑
A	00T0286-005	0MF5192-1R0-J1	0MF5192-6R3-J1	↑
UP/UP	00T0286-006	↑	↑	↑

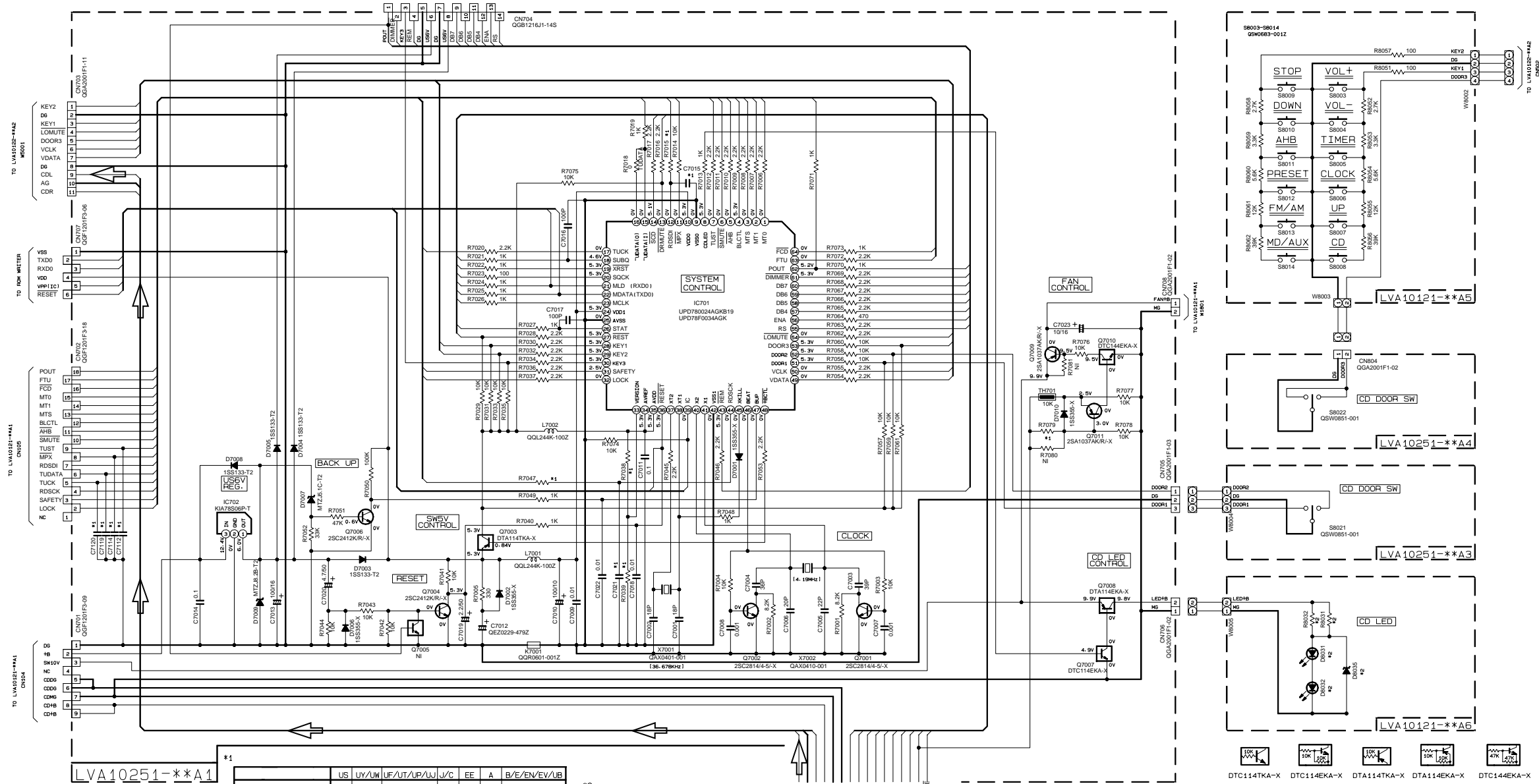


System control section

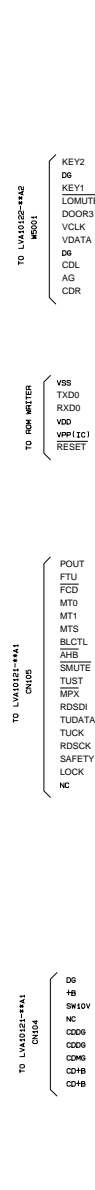
5



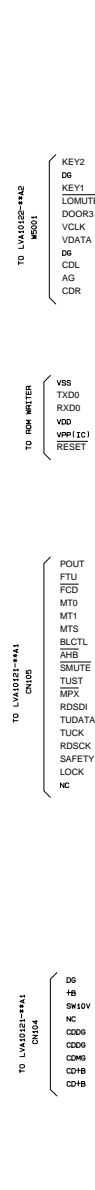
4



3



2



1

NOTES

- VOLTAGES ARE DC-MEASURED WITH A DIGITAL VOLT METER OR OSCILLOSCOPE WITHOUT INPUT SIGNAL.
CONDITION --- CD STOP AT AC SUPPLY
VOL: ±16 BASS ○ TREBLE ○ AHB ○ ON DIMMER/OFF
- UNLESS OTHERWISE SPECIFIED, RESISTORS ARE 1/10W (OR 1/16W) ±5% MG RESISTOR.
ALL RESISTANCE VALUES ARE IN OHM (Ω).
ALL CAPACITORS ARE CERAMIC CAPACITOR OR MYLAR CAPACITOR.
ALL CAPACITANCE VALUES ARE IN PICO (P).
ALL INDUCTANCE VALUES ARE IN MICRO (μ).
ALL E-CAPACITORS ARE SHOWN IN THE FORM OF CAPACITANCE (μF)/RATED VOLTAGE (V).

	US	UY/UM	UF/UT/UP/UJ	J/C	EE	A	B/E/EN/EV/UB
R7038	27K	68K	27K	47K	12K	4.7K	10K
R7039	4.7K	27K	4.7K	33K	27K	27K	-
R7015	-	-	-	-	1K	-	1K
C7015	-	-	-	-	100P	-	100P
R7047	-	-	-	-	1K	-	1K
C7021	-	-	-	-	100P	-	100P
C7112, C7114, C7119, C7120	100P	100P	100P	-	-	-	-
R7079	6.8K	5.1K	5.1K	5.1K	5.1K	5.1K	5.1K

	FS-SD550(R)/770(R)	FS-SD990(R)
D8021, D8022	SEL1E50CM	TY1H156P
D8025	MTZJ10C-T2	-
R8021, R8022	100	390
D8031, D8032	SEL1E568M	TY1H156P
D8035	MA3100/M-X	-
R8031, R8032	430	560

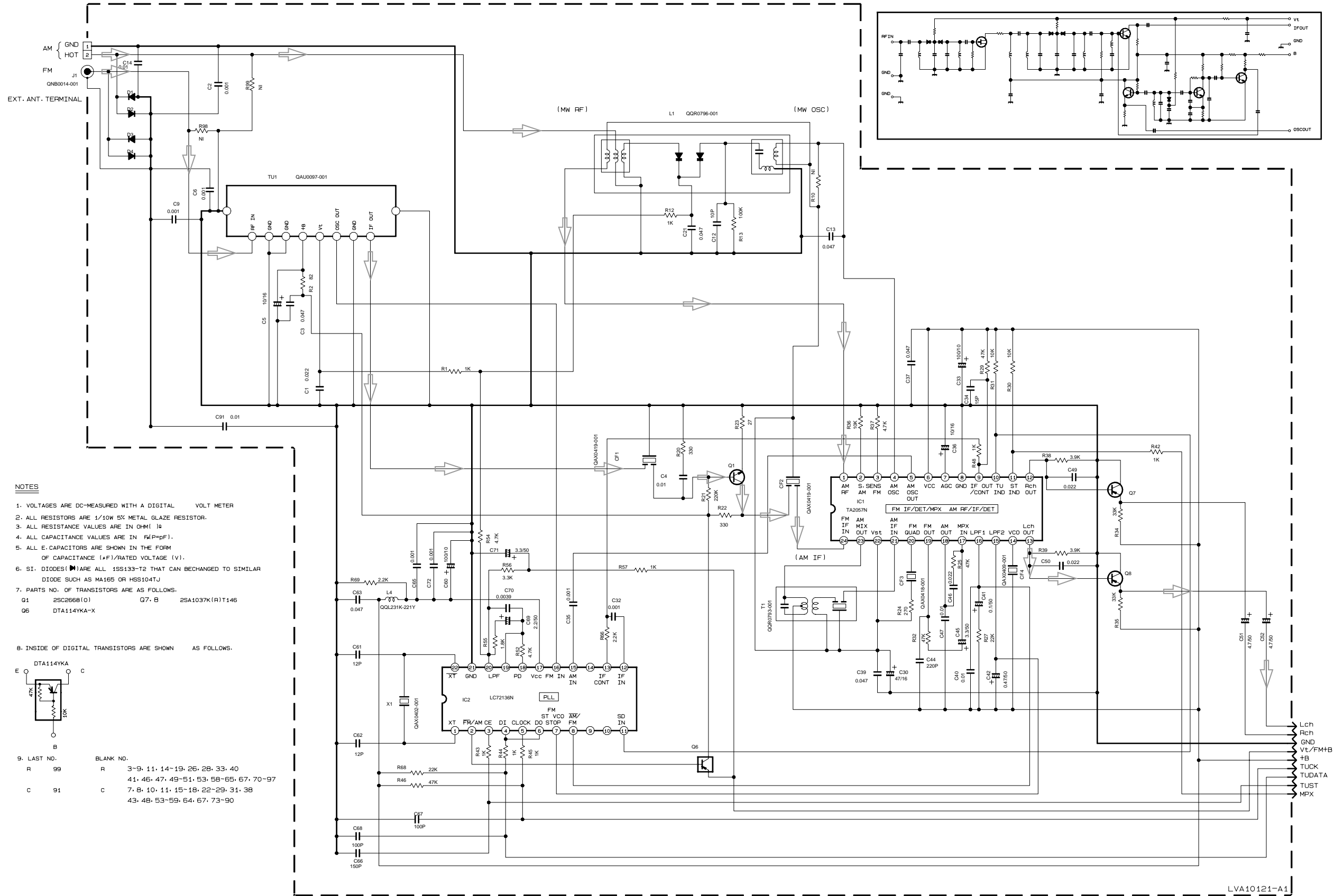
	FS-SD550/770	FS-SD990
D1801	QL0180-001	QL0180-001

Note: tr/s/jsc/sd550/LVS200612GNS10002-001A 1/8
FS-SD550R/770R/990R_ALL ver.

/s/R/LVS200612

CD signal

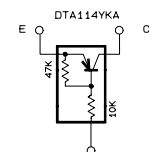
■ Tuner section



NOTES

- VOLTAGES ARE DC-MEASURED WITH A DIGITAL VOLT METER
- ALL RESISTORS ARE 1/10W 5% METAL GLAZE RESISTOR.
- ALL RESISTANCE VALUES ARE IN OHM (Ω)
- ALL CAPACITANCE VALUES ARE IN PICO-FARAD (pF)
- ALL ELECTROLYTIC CAPACITORS ARE SHOWN IN THE FORM OF CAPACITANCE (μF)/RATED VOLTAGE (V).
- SI DIODES (D) ARE ALL 1S133-T2 THAT CAN BE CHANGED TO SIMILAR DIODE SUCH AS MA165 OR H5S104TJ
- PARTS NO. OF TRANSISTORS ARE AS FOLLOWS.
Q1 2SC2668(O) Q7-B 2SA1037K(R)T146
Q6 DTA114YKA-X

8. INSIDE OF DIGITAL TRANSISTORS ARE SHOWN AS FOLLOWS.



9. LAST NO. BLANK NO.

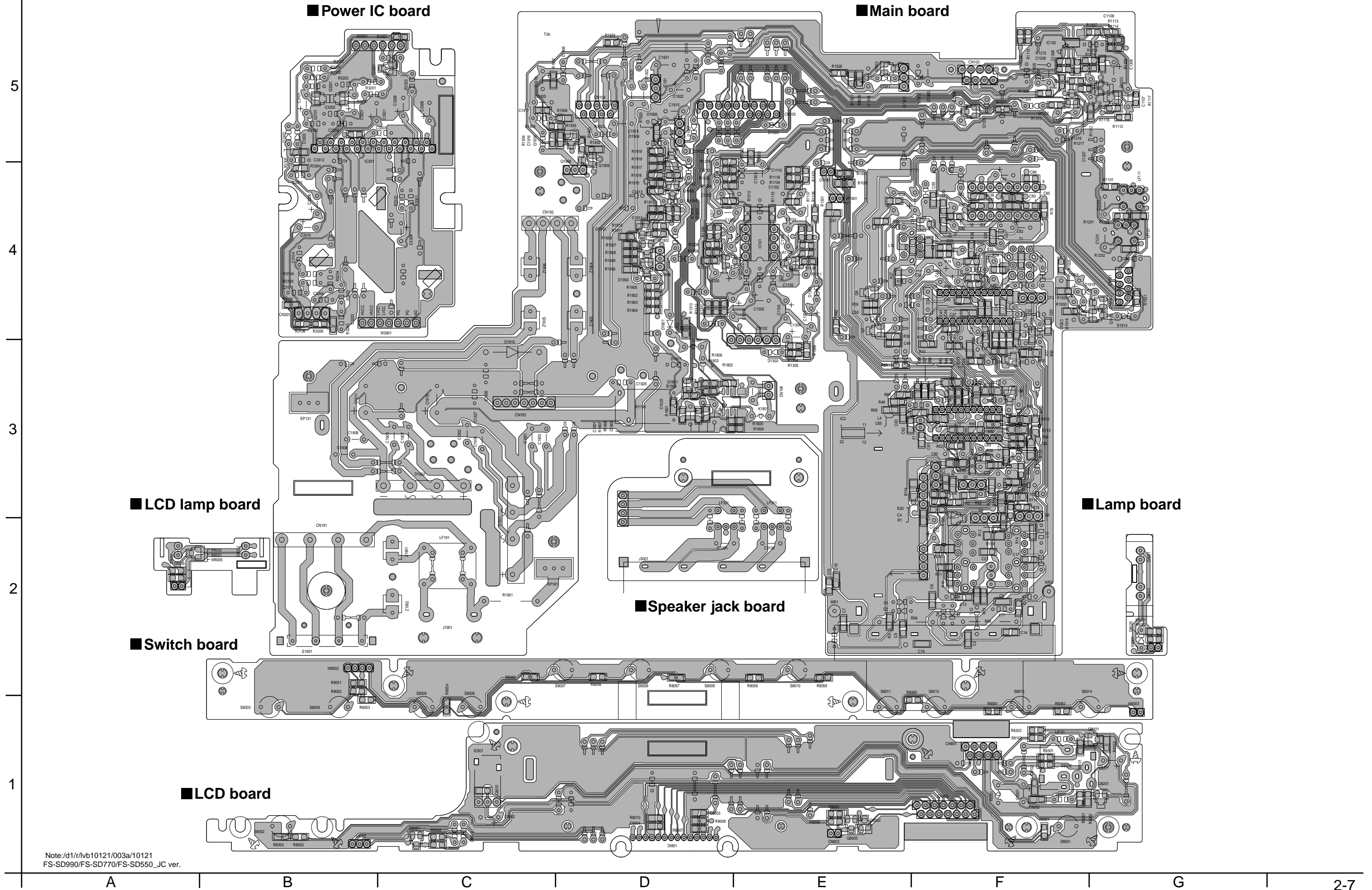
R	99	R	3-9, 11, 14-19, 26, 28, 33, 40
			41, 46, 47, 49-51, 53, 58-65, 67, 70-97
C	91	C	7, 8, 10, 11, 15-18, 22-29, 31, 38
			43, 48, 53-59, 64, 67, 73-90

CONDITION	PIN NO.	1	2	3	4	5	6	7	8	9	10	11	12	13	14	15	16	17	18	19	20	21	22	23	24
IC1	FM NO SIGNAL	2.0	0.5	0	2.0	5.1	5.1	0	0	0.3	5.1	5.1	1.1	1.1	4.4	3.7	3.7	1.4	0	1.3	1.1	2.0	2.0	5.1	2.0
	FM 60dB STEREO	2.0	0.5	0	2.0	5.1	5.1	1.1	0	0.3	0	0	1.1	1.1	4.3	4.1	3.7	1.4	0	1.4	1.1	2.0	2.0	5.1	2.0
	AM NO SIGNAL	2.0	0.5	0	2.0	5.1	5.1	0	0	0.3	5.1	5.1	1.1	1.1	4.5	0.1	0	1.4	1.4	1.5	1.6	2.0	2.0	5.1	2.0
IC2	FM NO SIGNAL	2.4	0	0	1.1	5.0	1.1	3.7	3.7	0	0	5.1	0	0	0	2.6	5.1	1.0	1.0	3.7	0	2.7			

Tr No.	Q1	Q6	Q7	Q8								
PIN NAME	E	C	B	E	C	B	E	C	B	E	C	B
FM 87.5MHZ	0	7.5	0.7	0.8	0.8	0	1.6	0	1.1	1.6	0	1.1
AM 520KHZ	0	0	0	0.8	0.8	0	1.6	0	1.1	1.6	0	1.1

➔ Tuner signal

Printed circuit boards

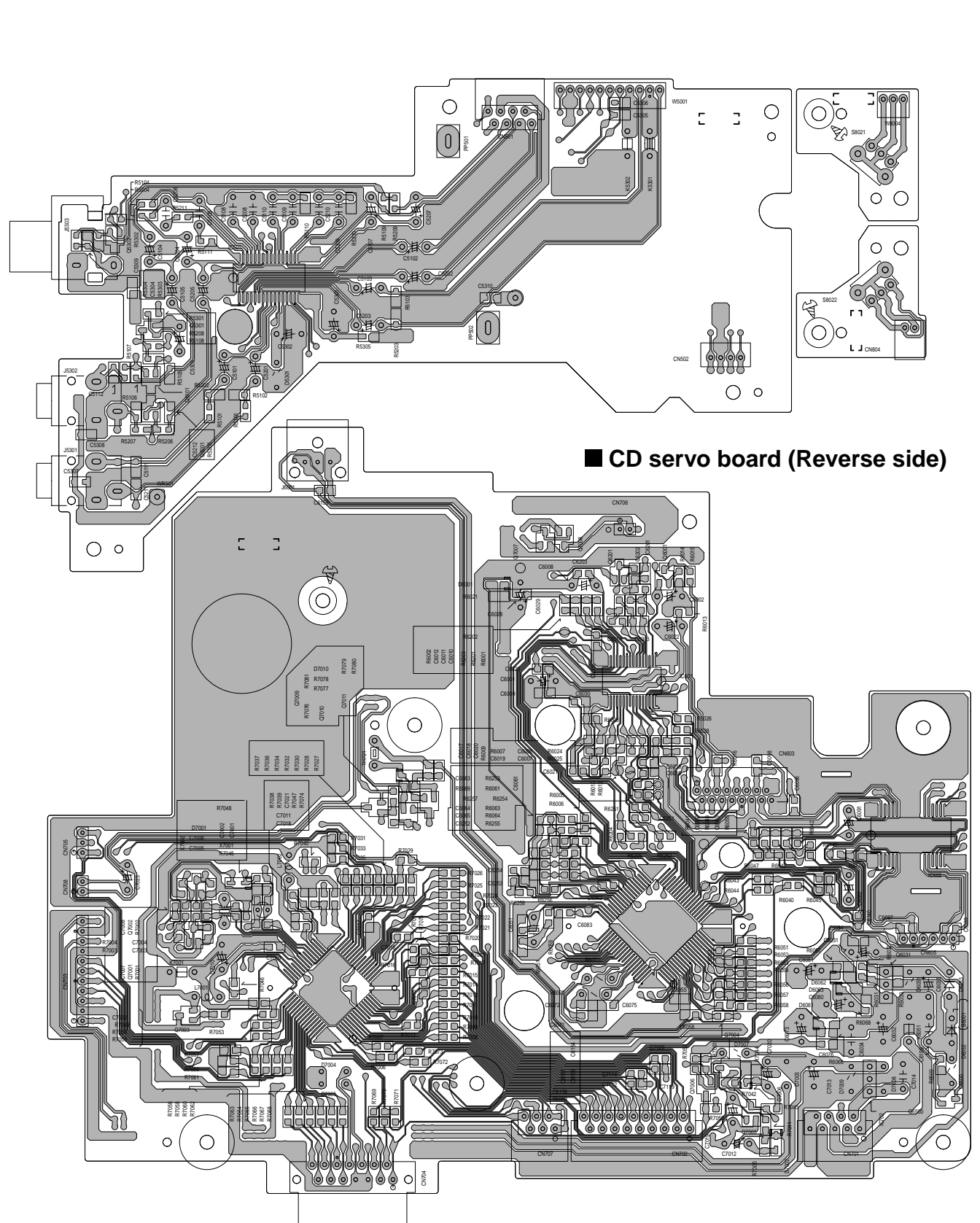
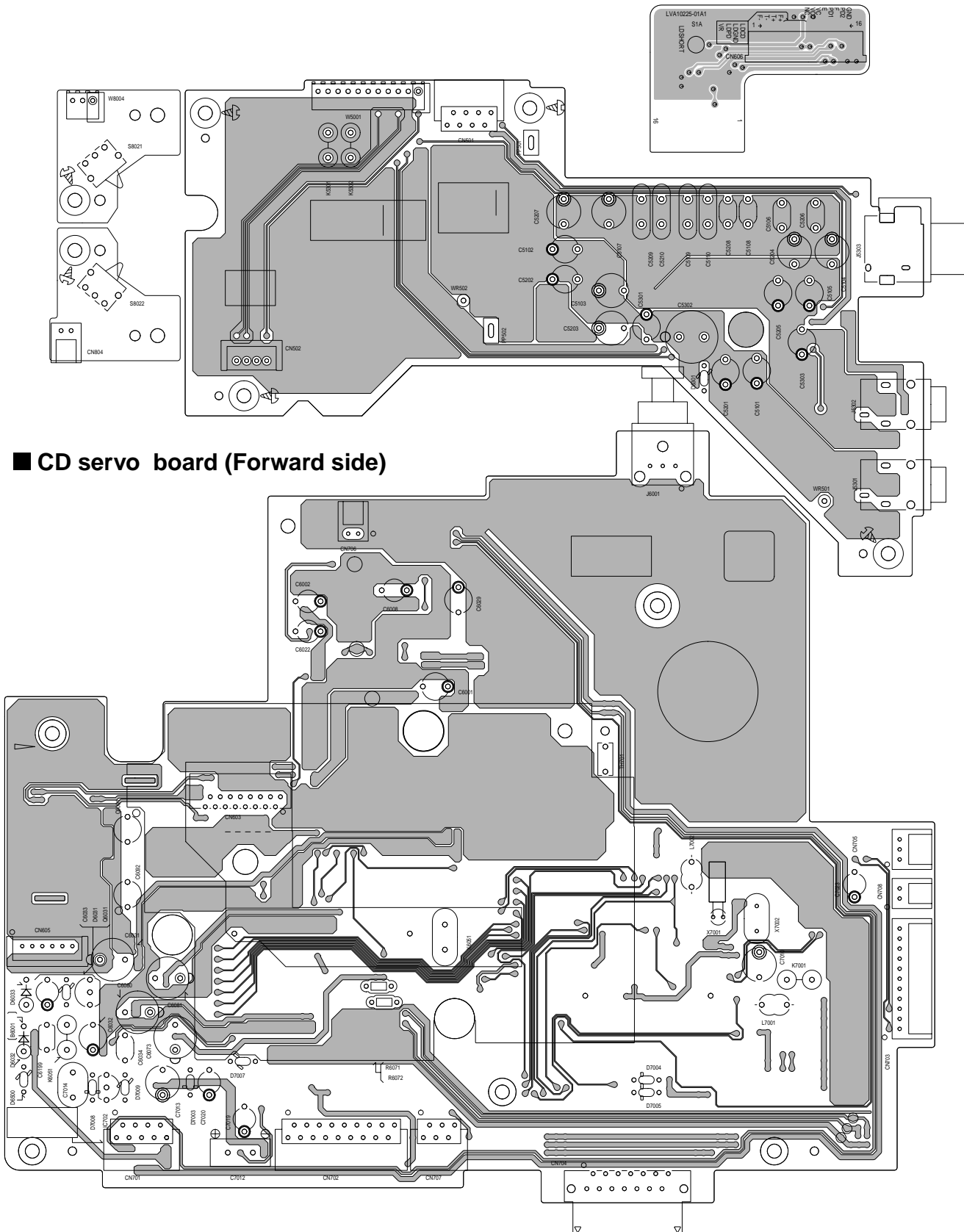


■ Line board (Forward side)

■ Sub board (forward side)

■ Line board (Reverse side)

5
4
3
2
1



■ CD servo board (Forward side)

■ CD servo board (Reverse side)